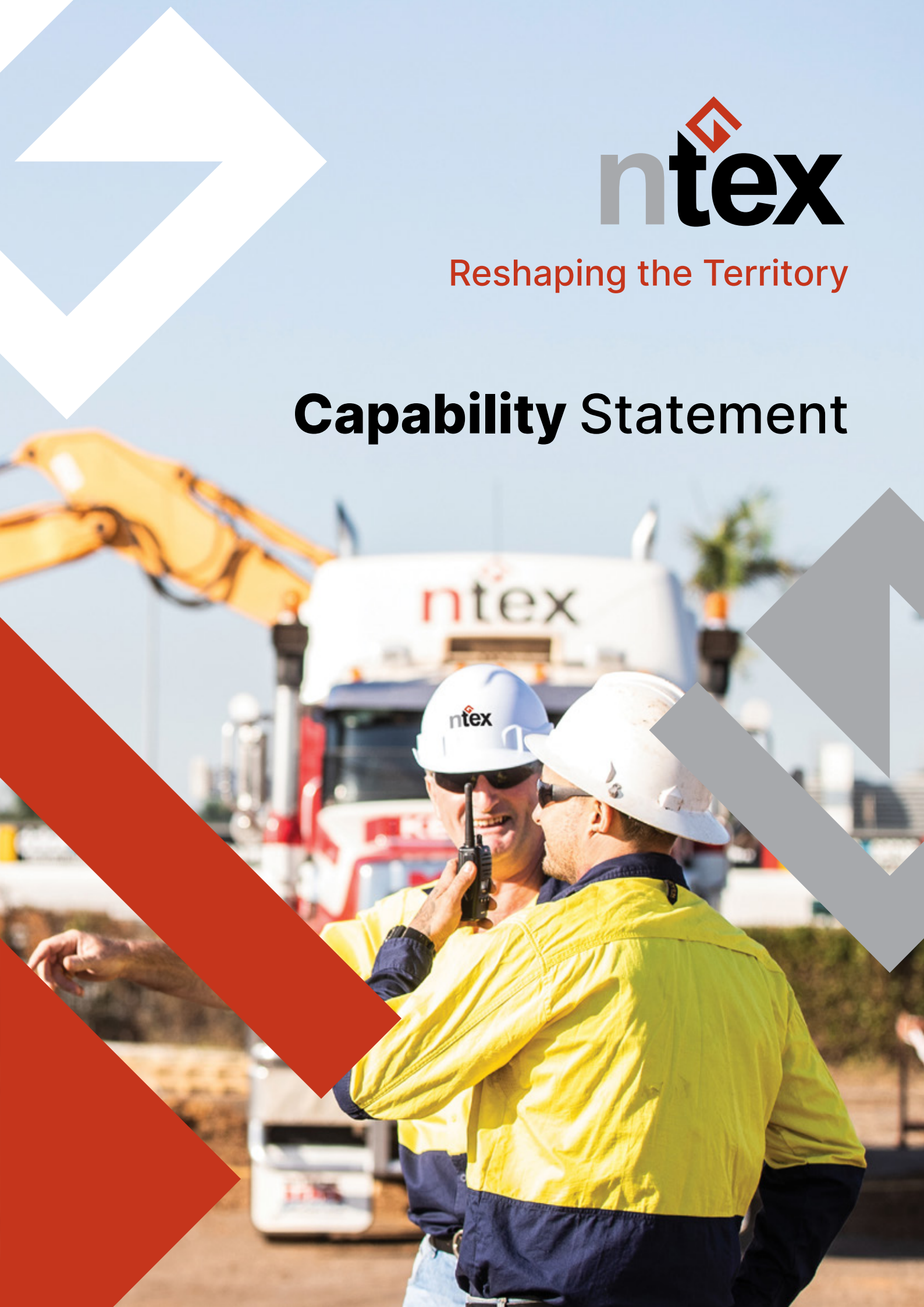




Reshaping the Territory

Capability Statement



Who we are

Established in 2010, NTEX is a leading player in the delivery of civil projects, demolition services and the recycling of construction and demolition waste.

We're driven by our desire to stand out; to do things in new ways that throw the industry on its head. And we don't shy away from the hard stuff.

Our approach is unique here in the Territory. We're positive disruptors; challenging the status quo, industry preconceptions and influencing policy and industry standards.

Bringing innovation to our industry can be a tough sell – so we just quietly go about our business and let our work and our methods speak for themselves.

Our team is made up of great people who share our values. With a network of trusted and reliable

sub-contractors, we work hard to create a legacy – not just for our business – but for our team and the broader community. We want to make a lasting, positive impact everywhere we go.

Gerry Breen Founder, NTEX

With a long history in construction and civil, Gerry is the driven leader of NTEX overseeing a loyal team getting the job done. He's proud of the way his team are open to new possibilities that change the way we do business.

Gerry sees NTEX as a crack SAS force – approaching and delivering projects with military precision. While NTEX is proud of its track record, at the heart of the business is a deep desire to care for family, the team, the community and the environment.

Our Vision

To be the industry expert in innovative approaches to demolition and civil, creating a circular economy for construction and demolition waste, and leading the way in benefiting our community and environment.



Our Growing Team

NTEX operates on the principle of “always leave a little salt on the table” so everyone the business works with from team members to subcontractors, clients, and community, comes out winning.

This value has attracted a team of high achievers who take pride and provide expertise in the work they do. This has resulted in NTEX being a company of choice for our clients who know we'll come up with both practical and ingenious solutions to get in and get the job done.

Gerry Breen **Company Director**

The driving force behind NTEX with close to 40 years experience in the civils and demolition industry, Gerry leads the strategy for sustainable growth of NTEX's development, and the company's push to create innovative solutions for the recycling of construction and demolition waste.

David (Turtle) Evans **Operations Manager**

With a strong Defence background and civil operations management experience in complex projects spanning over 20 years, David has led the implementation of NTEX's ISO accreditations, and is committed to ensuring the business operates efficiently and effectively as a company of choice for our clients.

Ivan Kitchen **Project Manager**

A highly accomplished specialist with over 30 years' experience within all aspects of construction and civil works, Ivan has worked in senior level roles on large scale multi-discipline projects. At NTEX Ivan consistently delivers quality outcomes and ensures project objectives are achieved in an effective and efficient manner.

Eileen Breen **Business Development Manager**

An experienced entrepreneur and business manager, Eileen's focus at NTEX is on developing circular economy strategies and to take the company forward into the next phase of its growth. Eileen is instrumental in developing a First Nations business mentoring scheme and creating triple bottom line outcomes that focus on people, planet and profit.



What we do

CIVIL CONSTRUCTION

As civil construction experts, we're experienced and equipped to deliver any infrastructure project anywhere in the Territory.

We offer:

- Design and construction
- Bulk and detailed excavation works
- Dams, drainage and service trenches
- Wastewater treatment solutions
- Demolition and removal

Our point of difference is our ability to recycle construction and demolition waste to save money, avoid project delays and reduce landfill.

We've delivered projects for clients in government, Defence, telecommunications, agriculture, tourism, sport and recreation, housing, mining, and oil and gas.

DECONSTRUCTION & DEMOLITION

Every demolition project is tricky and complex – putting it in the hands of our expert team is the best way to get a great outcome.

Our demolition expertise includes everything from:

- asbestos and contaminant removal
- fuel storage tanks
- single storey to high rise buildings
- commercial and industrial buildings
- Defence facilities
- airside and non-airside airport works
- sporting stadiums.

CONSTRUCTION & DEMOLITION WASTE RECYCLING

Our point of difference is our ability to recycle construction and demolition waste to save money, avoid project delays and reduce landfill.

From waste concrete and asphalt, we can manufacture:

- Type 1 Fill – Road Base
- Type 2 Fill – Crushed aggregate
- Type 3 Fill – Subbase aggregate
- Select Fill
- General Fill
- Asphalt.

We also have a community support program that offers good condition fixtures, fittings and furniture to sporting groups, remote communities and charities.



Accreditations

CAL Accreditation – D-5-18253-11-22

Rating

Building	Demolition	Mechanical Means	\$3m
Civil Works	Bridges & Culverts	Precast Culverts	\$6m
	Earthworks	Bulk Earthworks	
		Stabilisation	
	Rural Roads	Construct – sealed	
		Construct – unsealed	
		Maintenance – sealed	
		Maintenance – unsealed	
	Water, Sewer and Gas Mains	Water and Sewer Mains	

Licences

Environment Protection Licence EPL324: Collection and transport of listed wastes including contaminated construction waste, asbestos, contaminated soil, grease trap and sewage, surfactants containing metal and inorganic material, tyres and other waste. Waste Management and Pollution Control Act (NT) 1998



Quality, Environment and Safety

Our commitment to quality, safety and the environment is reflected in our international accreditation for **ISO9001**, **ISO14001** and **ISO45001**.



Memberships



Civil Construction Projects

DESIGN & CONSTRUCT WASTEWATER TREATMENT PLANT

Client: Department of Infrastructure, Planning and Logistics (DIPL)

Location: Jabiru

Commenced: March 2022

- Upgrade existing wastewater treatment ponds, under the Jabiru Futures program to remediate essential services assets
- Undertake a detailed design, construct, and commission the upgrades to provide a sustainable process for wastewater treatment
- Support NT Government's \$135.5m commitment to transition Jabiru Township from a mining town to a tourism and economic hub.

RAAF BASE TINDAL – ELECTRICAL & CIVIL INFRASTRUCTURE

Client: Department of Defence

Location: Katherine

Commenced: 2017 – 2 year project

- Detailed excavation of trenches for laying of electrical conduits and other civil infrastructure on site
- Development of flood retention basins
- Installation of 130,000L attenuation tanks.



CONSTRUCTION OF LEACHATE TREATMENT PLANT

Client: City of Darwin (Water and Carbon Group)

Location: Shoal Bay Waste Management Facility

Commenced: May 2021

- Construction of specially designed treatment plant capable of treating more than 50 megalitres per year of leachate including PFAS substances alongside biological and ecological treatment solutions to meet NTEPA requirements.
- Use of recycled construction and demolition waste to expand and seal access road and construct drainage structures.
- NTEX responsible for all labour, materials, testing and equipment.

WASTEWATER TREATMENT DAMS CONSTRUCTION

Client: AACo – Australian Agricultural Company

Location: Livingstone Beef Plant – Noonamah

Commenced: 2016 – 2017

- Upgrade of abattoir wastewater treatment facility in response to the NT EPA's directive to resolve ongoing environmental issues.
- Cut & fill of 70,000m³ to facilitate construction of 6m high dam walls
- Installation of storm water, plumbing and concrete infrastructure



Demolition Projects

When it comes to deconstruction and demolition, we're the go-to. We're known for our ability to get in, safely and quickly demolish what needs to go, and remediate the site before we leave.

We've worked on dozens of demolition projects across the Territory, being trusted to work in World Heritage areas such as Kakadu National Park, high security areas such as RAAF Tindal and Defence Establishment Berrimah, and environmentally significant areas including Mandorah, Blaydin Point and Daly River.

JOHN STOKES SQUARE DEMOLITION

Client: NT Government

Location: Nightcliff

Commenced: 2019

- Demolition of complex including 75 public housing units
- Removal of asbestos to Australian standards
- Site remediation of soil contamination – asbestos and dieldrin
- Compliant with EPA and NT WorkSafe requirements.



91%
of materials reused
or recycled



Construction & Demolition Waste Recycling

Our mission is clear: we want to create a sustainable, circular economy for construction and demolition waste.

With around 32% of landfill being construction and demolition waste, we knew that level of dumping was unsustainable. So we've found ways to make this waste available for other purposes.

To overcome the challenge of reinforced metal bars limiting the reuse potential of used concrete, we invested in innovative concrete crusher and recycler units. The units remove the reinforced metal

bars allowing the crushed material to be repurposed in civil projects.

The concrete crusher and recycler unit is completely mobile, meaning it can be used on-site to reduce truck movements, and also enables us to sort out construction and demolition waste issues in regional and remote communities.

We complete a pre-demolition audit for every job to determine the presence of any contaminants and figure out exactly what can be recycled and make it happen. Many of our projects see us recycling up to 95% of the available material.

The benefits of recycling construction and demolition waste

- ✓ Less construction waste in landfill
- ✓ Less truck movements transporting waste
- ✓ Less importing of material
- ✓ Less use of finite resources
- ✓ Lower project costs with no loss of quality.

Since July 2020, we've processed 16,500 tonnes of concrete and 16,000 tonnes of asphalt waste material. That's 32,000 tonnes of waste out of landfill and being used in other civil projects.



Construction & Demolition Waste Recycling Projects

RICHARDSON PARK DEMOLITION

Client: Department of Infrastructure, Planning and Logistics (DIPL)

Location: Ludmilla

Commenced: January 2021

- Demolition of grandstand, kiosk, change rooms, club house, hydraulics, electrics, large trees and removal of concrete stockpile.
- Use of recycled construction and demolition waste to create Type 2, Type 3 and select fill for Stage 2.
- 4500 tonnes saved from landfill, \$130k in project expenses saved and 97.9% of waste recycled.

98%
of waste recycled

4500
tonnes saved
from landfill

DAVOREN CIRCUIT COMPLEX (MOULDEN) DEMOLITION

Client: Department of Infrastructure, Planning and Logistics (DIPL)

Location: Moulden

Commenced: March 2021

- Demolition and removal of 32 public housing units and surrounding Infrastructure
- Removal of asbestos to Australian standards
- Recycling of construction and demolition waste
- Donation of 2975 tonnes of recycled waste to community group

91%
of waste recycled

3080
tonnes saved
from landfill

KATHERINE SPORT AND RECREATION CLUB DEMOLITION

Client: Department of Infrastructure, Planning and Logistics (DIPL)

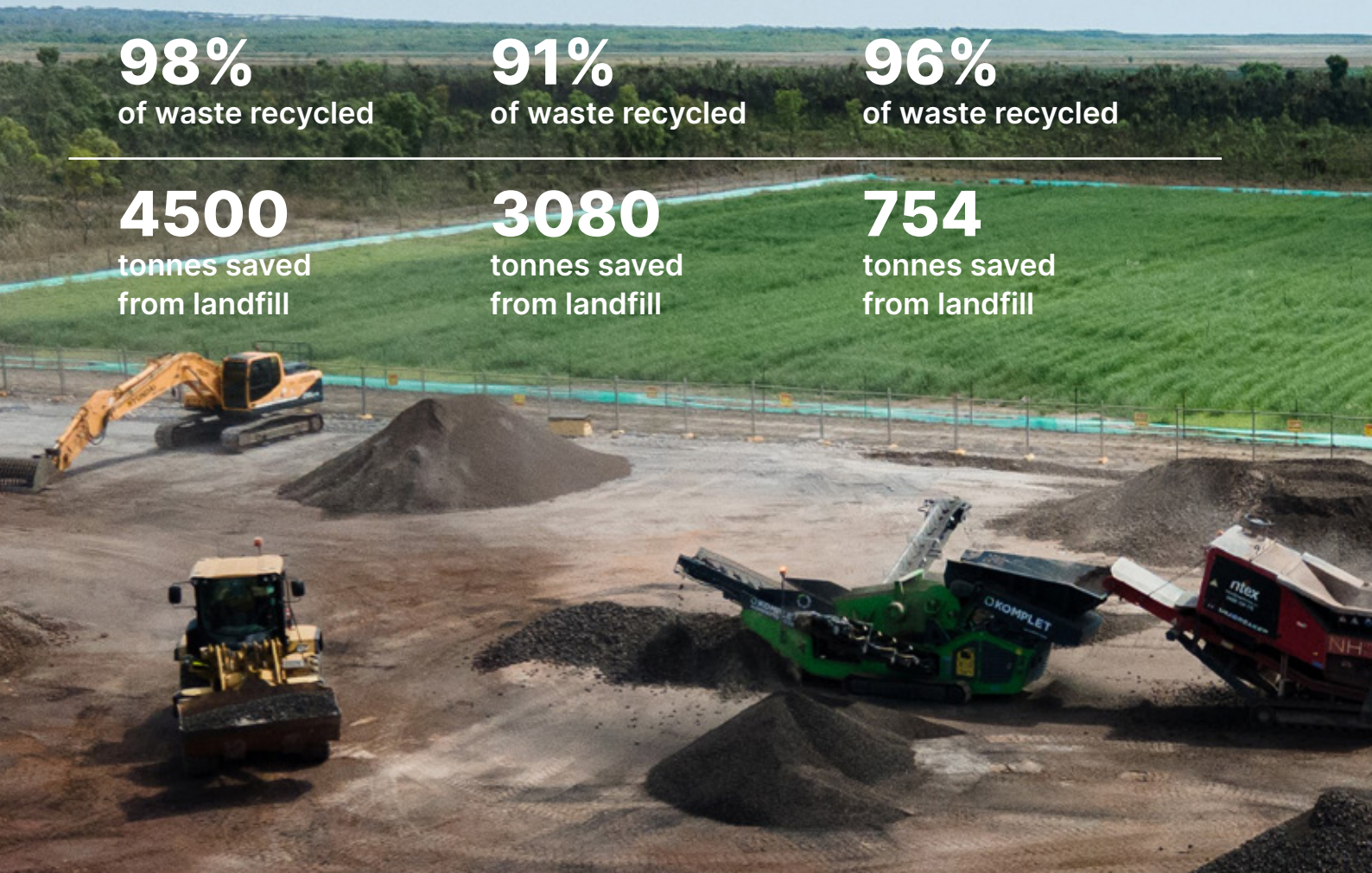
Location: Katherine

Commenced: October 2021

- Demolition of building and surrounding infrastructure
- Removal of asbestos to Australian standards
- Recycling of construction and demolition waste
- Donation of 754 tonnes of recycled waste to community groups.

96%
of waste recycled

754
tonnes saved
from landfill



One Person's Trash...

While most of our recycled waste is used in civil projects, we also provide a lot of support to community groups across the Northern Territory.

So far, our recycled waste has supported:

- Kakadu Park Rangers with type 2 material for road crossings & washouts
- Track and car park work at the Top End Motocross Club
- Light poles and distribution boards at the Katherine Speedway
- Display cabinets, main entrance and etched glass to the Katherine Men's Shed
- Resort furniture donated to the Northern Land Council for use in remote communities
- Rehabilitation of Daly River landfill site
- Donation of white goods, kitchen furniture, security screens & louvers to HPA Helping People Achieve – Recycle Shop for resale.



Plant and Equipment

NTEX has invested in an extensive fleet of plant and equipment to assist in the delivery of complex and challenging civil and demolition projects.

We can fully mobilise for both local Darwin, regional and remote location projects right across the Territory.

Excavators

From 3 to 45 tonne excavators with a large complement of buckets and attachments including pulverisers, shears and magnets.

Trucks

Water trucks, hook lift trucks, side tippers and floats.

Crushers & Screeners

Innovative demolition and recycling equipment capable of recycling and remanufacturing concrete and asphalt waste, including concrete waste with reinforced metal bar.

Posi-Tracks & Telehandlers

Compact track-based digging and moving and extensive reach capacity.

Technology to Support our Mission

Along with our crushing and recycling unit, we use a range of technologies in our projects.

We use 3D Modelling technology for surveying and quantifying stockpiles during and after demolition as well as drone technology to check for impediments during demolition and to prepare dilapidation reports as needed.

Our team are highly experienced machine operators across the whole fleet and hold the licences, tickets and competency certification required for their safety and yours.



Client Endorsements

Department of Infrastructure Planning and Logistics (DIPL) – Andrew Jacka (Superintendent)

Richardson Park Demolition Project 2021

NTEX was able to use the concrete waste from the project and produce a type 2 material that will be used in the redevelopment of the site. The innovation techniques used will be a huge cost saving to the overall redevelopment project and an excellent example of how future local demolition projects should be undertaken.

Sitzler – Michael Zampa (Operations Manager)

Testimonial

Gerard Breen and his Team at NTEX Pty Ltd have, over the years, developed a strong working relationship with Sitzler by continuing to provide a level of service and commitment that has very much aligned with Sitzler's expectations in all regards. NTEX have assisted greatly as one of our key Subcontractors on many of our complex projects by demonstrating a positive 'can do' attitude to a broad spectrum of challenges within the Civil Construction, Demolition and Logistics Services they provide. At Sitzler, we regard NTEX as a competent delivery partner across many of our current and future projects across the Northern Territory and we look forward to the continued strength of the ongoing working relationship.

The Water and Carbon Group – David Leinster (Wastewater and Solutions Development Manager)

Construction of Leachate Treatment Plant

NTEX have worked with the Water and Carbon Group on a number of civil works packages at the Shoal Bay Leachate Treatment Plant. The works under NTEX control have been delivered efficiently and with a high level of quality assurance. The client has been particularly impressed with the use of recycled building materials, including recycled concrete and asphalt to build roads and foundations at the site.

Agon Environmental – John Iddles (Director of Technical Services)

Testimonial

NTEX has demonstrated an innovative approach to completing works to ensure their client has a range of options to consider in order to provide a value for money service. The use of these solutions has led to cost savings and improved environmental performance of the works completed.



First Nations Business Development

Starting a business is not for the faint hearted and having an experienced mentor can make all the difference on the road to success.

NTEX are dedicated to making a practical difference in the communities we work in. That's why we decided to support other small businesses through our pro-bono mentoring scheme.

Select First Nations businesses starting out in the construction industry can tap into our expert human resources for coaching in tendering, work health and safety, administration, and access to our extensive industry networks plus much more.

It's really important to us that the small businesses we support develop skills to succeed and are empowered to determine their own futures.

We have an in-house business development expert (Eileen Breen) who has extensive experience in coaching and mentoring First Nations entrepreneurs through her previous work in the not-for-profit space. Eileen and the NTEX team are committed to playing an active role to improve the situation of aspiring entrepreneurs and providing opportunities to First Nations Territorians.

Photo credit: Barry Davis - Illeuwurru Building Services



Caption: Furniture donated to Remote Communities



Richardson Park Demolition



RSL Darwin City Demolition



NTEX PTY LTD

ABN 82 142 817 767

560 Girraween Rd, Girraween NT 0836
PO Box 1331, Coolalinga NT 0839

T G Breen 0428 136 075

E ntex@ntex.com.au

www.ntex.com.au